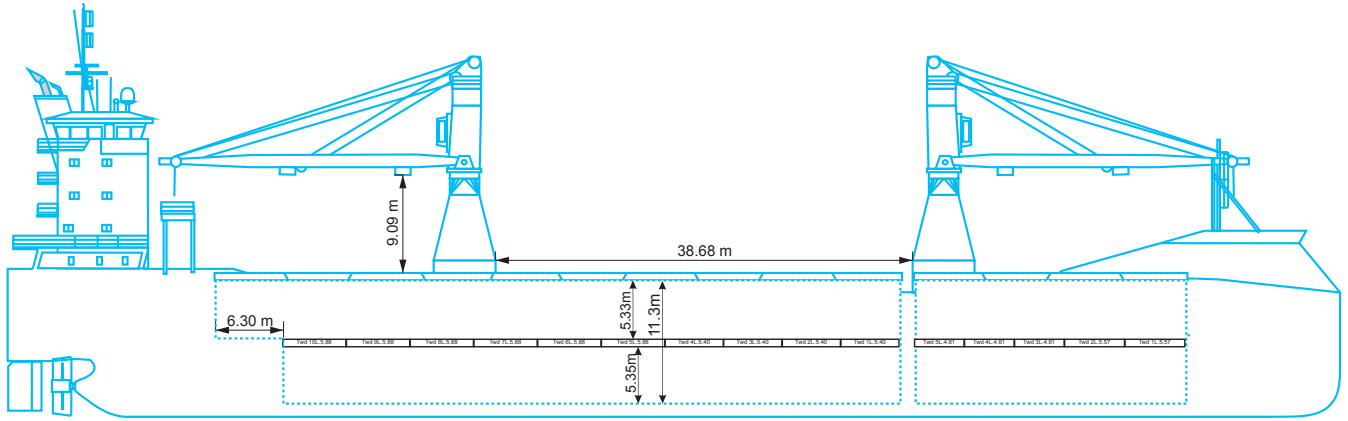




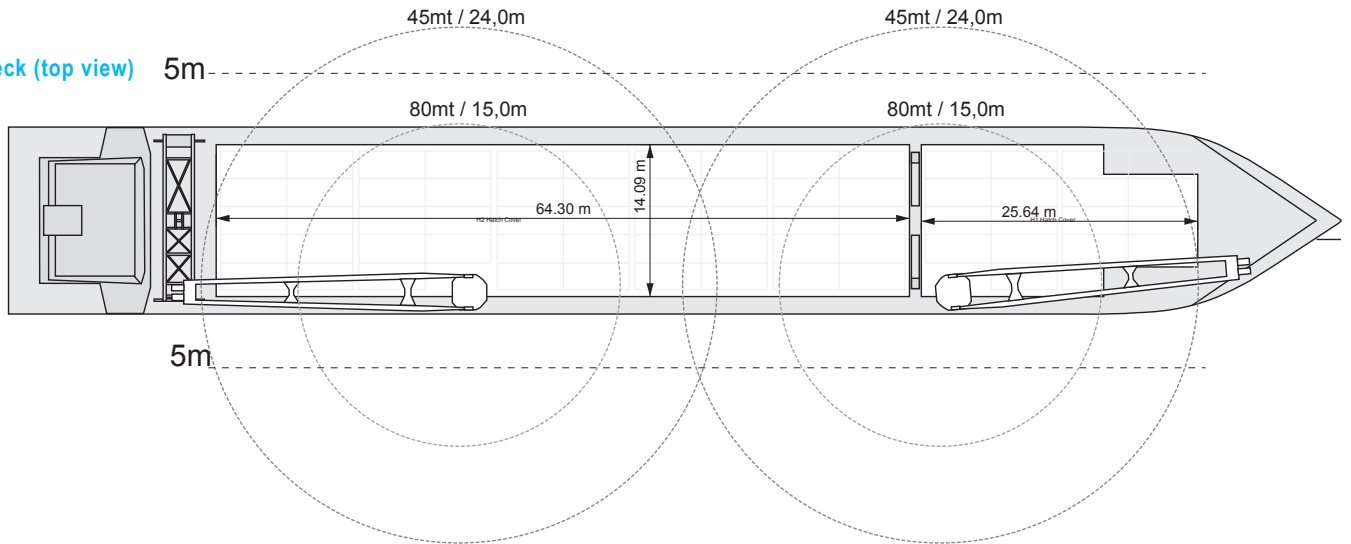
GENERAL INFORMATION	
Name	UAL CASTLE
Type	MPP Dry Cargo Ship
IMO	9626168
Built	2013
Flag	PORTUGAL
Class	BV
Call Sign	CQEA8
TONNAGE	
DWT	11183,09 mt
GT	7227 mt
NT	3494 mt
MAIN DATA	
LOA	123,96 m
Beam	17,40 m
Summer Draft	8,46 m
HOLDS / HATCHES	
Number	2 HOLDS
Hold Dimensions	
Hold No.1	25,2 m x 13,8 m / 8,25m
Hold No.2	63,7 m x 13,8 m
FLOOR SPACE	
Under Deck	2241 m ²
On Deck	1068 m ²
Total	3309 m ²
CARGO CAPACITY	
Total Capacity (WITHOUT TWEENDECK)	12.622,68 CBM / 446.931,12 CBFT

PERFORMANCE	
Max Speed	11,5 kts
DECK STRENGTHS	
Tanktop	18,0 mt/m ²
Tweendeck	3,5 mt/m ²
Hatchcover	2,50 mt/m ²
CONTAINER CAPACITY	
In Hold	244 TEU
On Deck	234 TEU
Total (Nonimal)	478 TEU
Stackweight on deck	35 mt/TEU; 54 mt/FEU
Stackweight under deck	25 mt/TEU; 30 mt./FEU (TD) // 60-100 mt/TEU; 65-122 mt/FEU (TT)
Reefer Plugs	30
CARGO / HANDLING GEAR	
Cranes	2 Cranes; Each up to 80mt
Comined Lift Capacity	160 mt
Position	STBD SIDE
Automode	No
Hatch Gantry	Yes
SPECIAL EQUIPMENT / FEATURE	
Highest Iceclass	Yes, Ice Class IA
CO2 Fitted	Yes
Bowthruster	1 X 400 Kw (536 HP)
IMO 1-9 Fitted	Yes
A60 Bulkhead	Yes
Grain Fitted	Yes

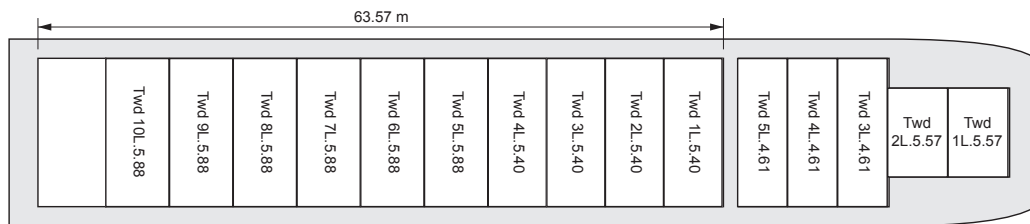
Side view



Weather deck (top view)



Tween deck (top view)



Tanktop (top view)

