



GENERAL INFORMATION

Name	UAL FORTITUDE
Type	MPP Dry Cargo Ship
IMO	9402079
Built	2008
Flag	PORTUGAL
Class	BV
Call Sign	CQEF6

TONNAGE

DWT	12638 mt
GT	9611 mt
NT	4260 mt

MAIN DATA

LOA	138,87 m
Beam	21,00 m
Summer Draft	8,00 m

HOLDS / HATCHES

Number	3 Holds / 3 Hatchcovers
Hold Dimensions	
Hold No.1	18,75 m x 15,019 m / 10,056 m (narrow forward)
Hold No.2	42 m x 17,5 m
Hold No.3	25,5 m x 17,5 m

FLOOR SPACE

Under Deck	2844 m ²
On Deck	1462 m ²
Total	4306 m ²

CARGO CAPACITY

Total Capacity (WITHOUT TWEENDECK)	15.952 CBM / 563.340 CBFT
------------------------------------	---------------------------

PERFORMANCE

Max Speed	15,0 Kts
-----------	----------

DECK STRENGTHS

Tanktop	16 mt/m ²
Tweendeck	H1 : 2,5 mt/m ²
	H2 Upper : 2,5mt/m ² ; Middle : 4,0mt/m ² ; Lower : 4,0mt/m ²
	H3 : 4,0 mt/m ²
Hatchcover	1,75 mt/m ²

CONTAINER CAPACITY

In Hold	334 TEU
On Deck	331 TEU
Total (Nonimal)	665 TEU
Stackweight on deck	50 mt/TEU; 65 mt/FEU
Stackweight under deck	90 mt/TEU; 120 mt/FEU
Reefer Plugs	20

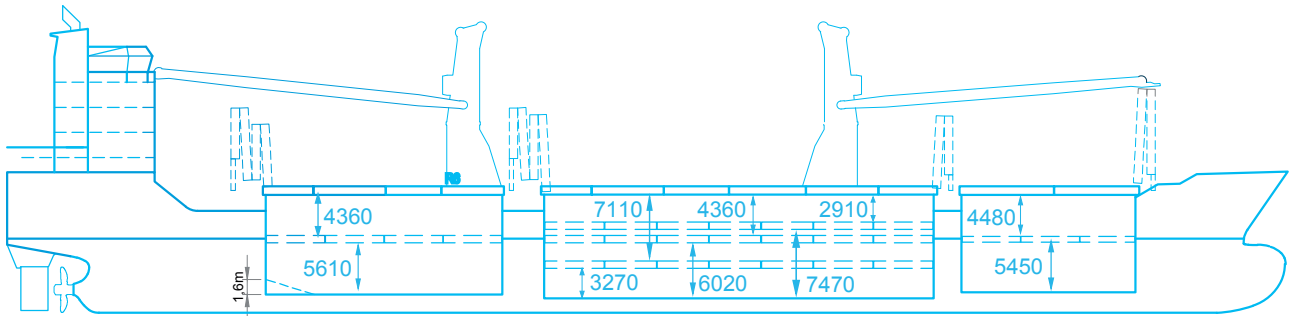
CARGO / HANDLING GEAR

Cranes	2 Cranes; Each up to 180mt
Comined Lift Capacity	360 mt
Position	Port Side
Automode	Yes
Hatch Gantry	No

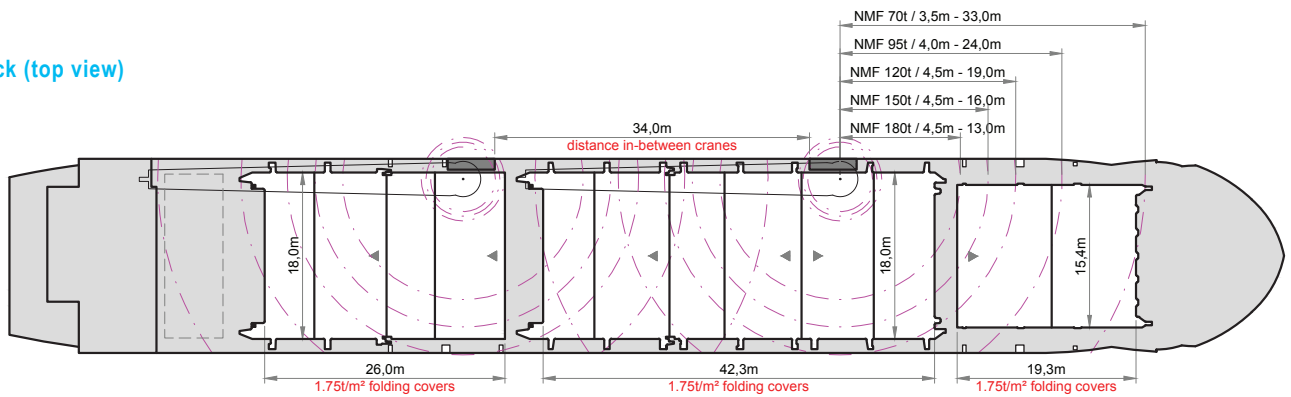
SPECIAL EQUIPMENT / FEATURE

Highest Iceclass	Yes, Ice Class IA
CO2 Fitted	Yes
Bowthruster	1 X 500 Kw (670 HP)
IMO 1-9 Fitted	Yes
A60 Bulkhead	Yes
Grain Fitted	Yes

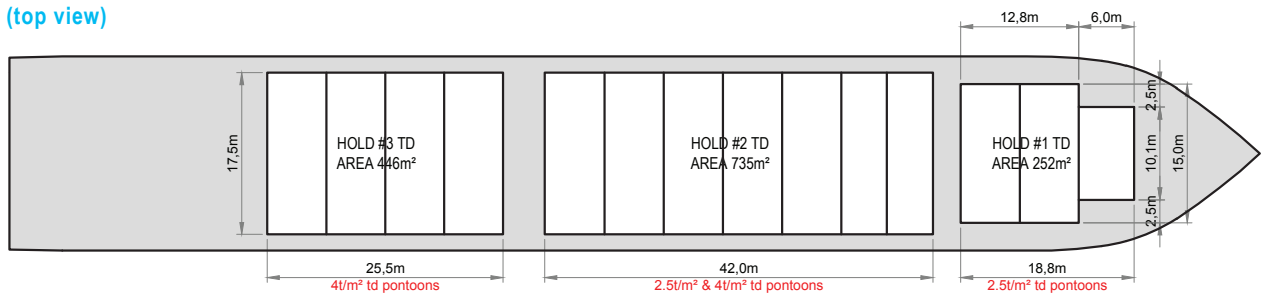
Side view



Weather deck (top view)



Tween deck (top view)



Tanktop (top view)

