



GENERAL INFORMATION

Name	UAL HARRIER
Type	MPP Dry Cargo Ship
IMO	9594303
Built	2012
Flag	ISLE OF MAN
Class	BV
Call Sign	2FBR6

TONNAGE

DWT	8955,91 mt
GT	6190 mt
NT	2619 mt

MAIN DATA

LOA	109,90 m
Beam	17,40 m
Summer Draft	8,0 m

HOLDS / HATCHES

Number	1 Hold
Hold Dimensions	
Hold No.1	13,8 m x 58,8 m;narrow forward part 11,2 m x 8,28 m
Hold No.2	-

FLOOR SPACE

Under Deck	2015 m ²
On Deck	1068 m ²
Total	3083 m ²

CARGO CAPACITY

Total Capacity (WITHOUT TWEENDECK)	10.688 CBM / 377.468 CBFT
------------------------------------	---------------------------

PERFORMANCE

Max Speed	11,5 Kts
-----------	----------

DECK STRENGTHS

Tanktop	18,0 mt/m ²
Tweendeck	3,5 mt/m ²
Hatchcover	2,50 mt/m ²

CONTAINER CAPACITY

In Hold	204 TEU
On Deck	174 TEU
Total (Nonimal)	378 TEU
Stackweight on deck	35 mt/TEU; 54 mt/FEU
Stackweight under deck	60 mt/TEU - BAY No: 1,3,13-25 100 mt/TEU - BAY No: 5,7,9,11 122 mt/FEU - BAY No: 6,10 65 mt/FEU - BAY No: 14-22 Tweendeck : 25 mt/TEU; 30 mt/FEU
Reefer Plugs	30

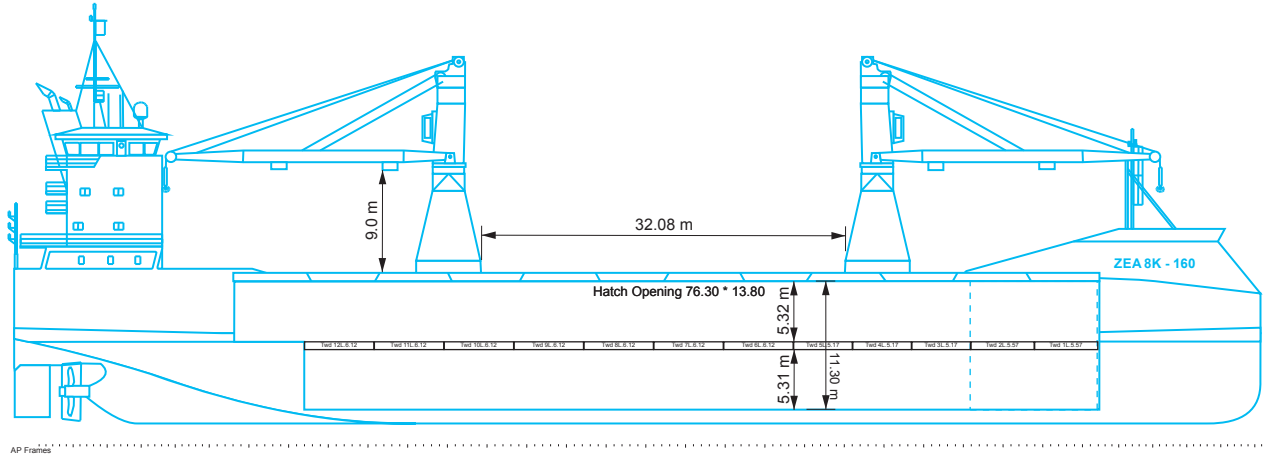
CARGO / HANDLING GEAR

Cranes	2 Cranes; Each up to 80mt
Comined Lift Capacity	160 mt
Position	STBD SIDE
Automode	No
Hatch Gantry	Yes

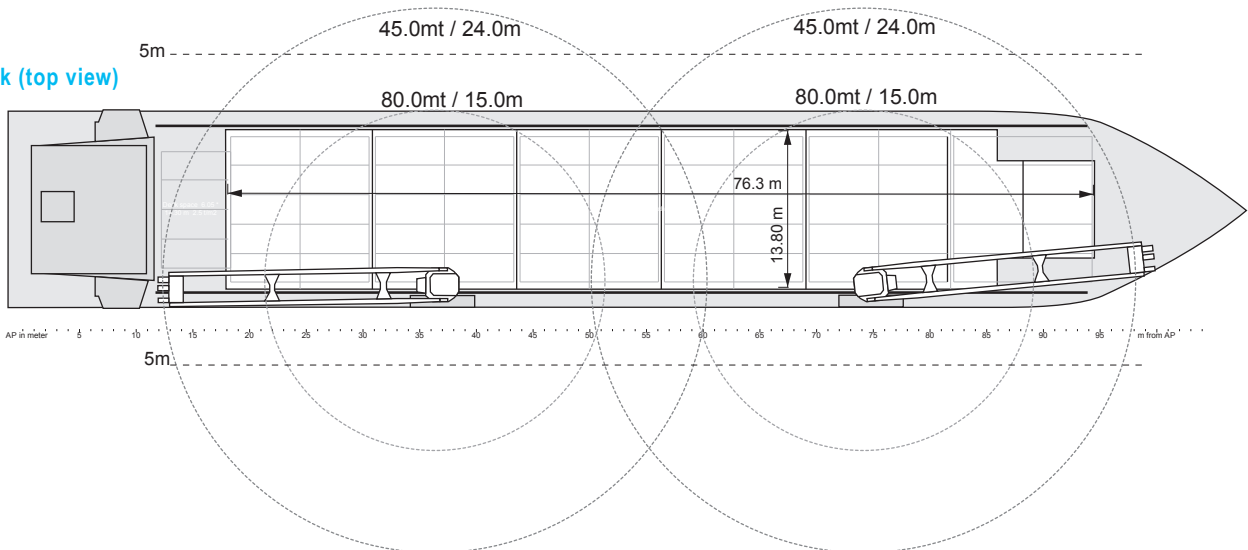
SPECIAL EQUIPMENT / FEATURE

Highest Iceclass	Yes, Ice Class IA
CO2 Fitted	Yes
Bowthruster	1 x 400 Kw (536 HP)
IMO 1-9 Fitted	Yes
A60 Bulkhead	Yes
Grain Fitted	Yes

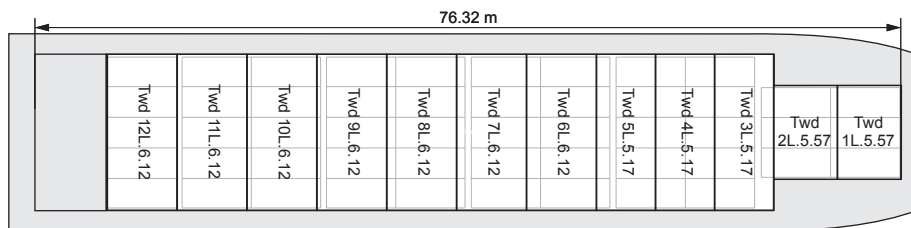
Side view



Weather deck (top view)



Tween deck (top view)



Tanktop (top view)

